



HUBCAP

# HUBCAP: Digital Innovation Hubs and Collaborative Platform for Cyber-Physical Systems

John Fitzgerald  
Newcastle University, UK



## PROJECT PARTNERS

Aarhus University  
Fortiss GmbH  
Fundazione Bruno Kessler  
University "Lucian Blaga" of Sibiu  
Research Institutes of Sweden

Politecnico di Milano  
Controllab Products  
Verified Systems International  
Technology Transfer Systems  
Newcastle University  
Virtual Vehicle Research

KTH Royal Institute of Technology  
Engineering Ingegneria Informatica  
F6S Network Limited  
Unparallel Innovation  
BEIA Consult  
Validas



Horizon 2020 Programme  
Grant Agreement #872698



SmartAnythingEverywhere

# HUBCAP in a Nutshell

- Lower barriers for SMEs to realise the potential of growing autonomy in CPS by accessing advanced model-based design (MBD) technology, providing training and guidance.
- **Innovation Action** co-financed by the European Commission, DT-ICT-01-2019 Smart Anything Everywhere initiative
- 17 Partners from 10 countries
- **Coordinator:** Prof. Peter Gorm Larsen, Aarhus University, Denmark
- **Project duration:** January 2020 - December 2022, 36 months
- **Total EC contribution:** EUR ~7.95M
- **Grant Agreement No.:** 872698

## HUBCAP Ecosystem



Digital Innovation Hubs

Innovation Ecosystem

Collaboration Platform



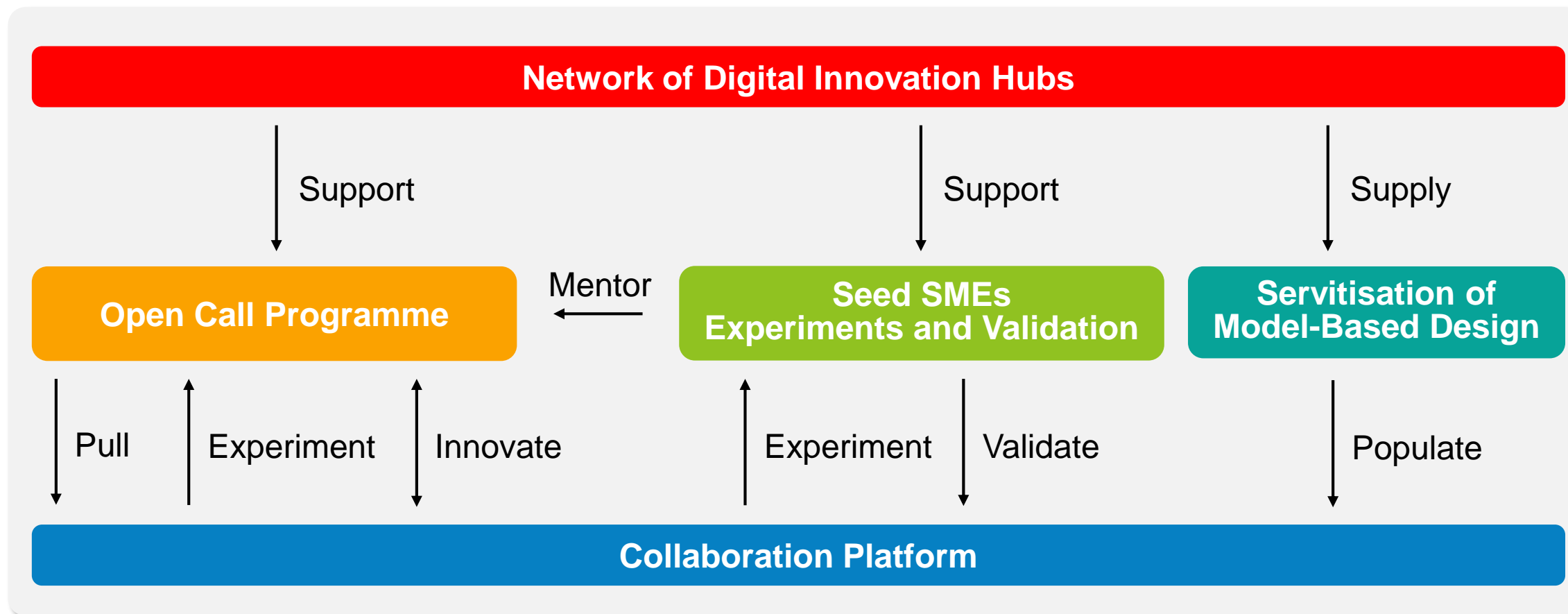
Open Calls for SMEs

Model-Based Design



HUBCAP

# Overall Approach



**Network of DIHs:**

- Inventory of service offerings
- Ecosystem building
- Cross-DIH collaboration
- Network sustainability

**Seed SMEs**

- Enabling quicker start for the platform
- Early-stage prototypical usage of HUBCAP
- Awareness-raising demonstrations

**Collaboration Platform:**

- Cloud-enabled, based on DIHIWARE
- “Access to” and “Collaborate with”:
  - Ecosystem
  - Community-building
  - Marketplace
  - Sandbox

**Open Calls**

- Engage early-adopters
- 3 open call series

**Model-Based Design:**

- Populating the platform
- Enabling model-based services in sandbox
- Multi-user, validation and logging capabilities



# Open Call Strategy

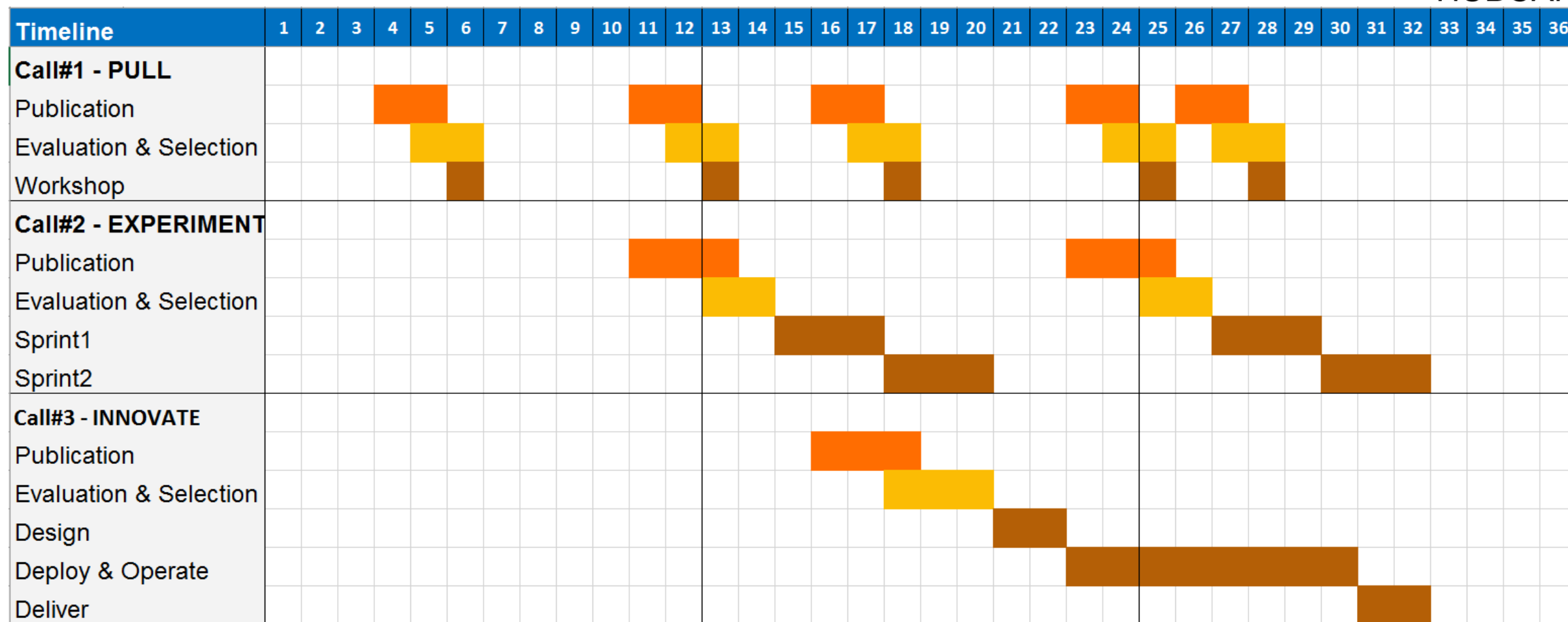
Date Opening-Closure	Funding amount per Partner	Organisation type eligible for Funding	Single Company or Consortium	Technology	Sub-Tech	Application Domain	Other Important Aspect
<b>PULL Calls</b> #1.1 4/20-5/20 #1.2 11/20-12/20 #1.3 4/21-5/21 #1.4 11/21-12/21 #1.5 2/22-3/22 (preliminary)	1k€	Start-ups, SMEs, Mid-caps, RTOs	Single Company	CPS	MBD: models and tools	Open, e.g., Production, Transport, Robotics, Sensors, Space, Semiconductors, power systems, Avionics (...)	<ul style="list-style-type: none"> <li>Integrate existing and marketable CPS+MDB tools &amp; service providers</li> <li>Help individual SMEs get assets on the platform, enlarging the HUBCAP ecosystem &amp; pool of tech tools/offers</li> </ul>
<b>EXPERIMENT Calls</b> #2.1 11/20-1/21 #2.2 11/21-1/22 (preliminary)	30-75k€ (max 60k per partner)	SMES MBD CPS providers (from HUBCAP ecosystem) SMEs MBD CPS users/adopters	Consortia of 2 SMEs	MBD CPS Products and services		As above	<ul style="list-style-type: none"> <li>Push on adoption &amp; deployment of MBD tools, CPS products &amp; services, by users/ customers</li> <li>Consortia experiment with MBD (by integrating HUBCAP offers, or implementing in a new solution)</li> </ul>
<b>INNOVATE Call</b> #3.1 4/21-6/21 (preliminary)	up to 200k€ (max 60k per partner)	SME MBD CPS Tech provider /integrator and an SME end-user	Consortia of 2-3 SMEs	MBD CPS Experiment		As above	<ul style="list-style-type: none"> <li>Develop and demonstrate high value and impactful experiment employing MBD CPS technologies</li> <li>Consortia of 2-3 SMEs innovate with MBD to create new CPS-related products</li> </ul>





HUBCAP

# Open Call Preliminary Schedule





HUBCAP

# Ideas for Collaborations

- Helping each other with visibility of the projects and calls
- Access to the HUBCAP Platform
- Cross-promotion of opportunities and activities
- Sharing of challenges, prospects, results and best practices



# Thank You!



HUBCAP

## Contact

**Prof. Peter Gorm Larsen**

Department of Engineering, Aarhus University

Finlandsgade 22,

DK-8200 Aarhus N

Denmark

[pjl@eng.au.dk](mailto:pjl@eng.au.dk)

