



# DigiFed Project tools to foster technology transfer



Expertise



Networking



Competencies



Advanced  
Technology



Funding



Innovative  
Solutions



Isabelle Chartier Coordinator  
IRT Nanoelec – CEA/LETI

**17/11/2020 DigiFed DIH-Network Event**



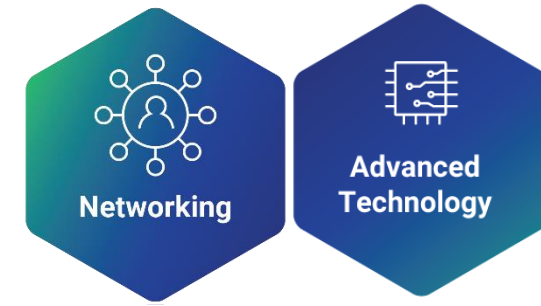
# DigiFed : Digitising Europe's Industry Together

**DigiFed** is a H2020 funded project dedicated to support **European cross-border** partnerships to foster industry to digitalize their product/service and reach get into new markets enabled by **Cyber Physical Systems (CPS)** & **embedded Systems**

- **12 Partners from 9 European Countries**
- **Duration:** 3 years, 01/01/20 to 31/12/22,
- **Budget:** 8 M€
- **Cascade Funding:** 3.9 M€ to SMEs, start-ups & MidCaps



**DigiFed** is part of the European Commission “Digitising European Industry - DEI- strategy”  
<https://smartanytingeverywhere.eu/>



# The DigiFed **networking** strategy



Building upon existing **D**igital **I**nnovation **H**ubs (**DIHs**), DigiFed fosters **EU cross-border partnerships** between:

- SMEs,
- Midcaps,
- large enterprises
- Universities
- Public bodies
- Research & Technology Organisations

# DigiFed 3 main innovation pathways



## Application Experiment

- Get funding and technical expertise to develop your CPS prototype
- Access to innovation management training program
- Target 38 projects



## Digital Challenge

- Get funding to develop a CPS prototype answering a large company need
- Get access to new markets
- Target 3 projects

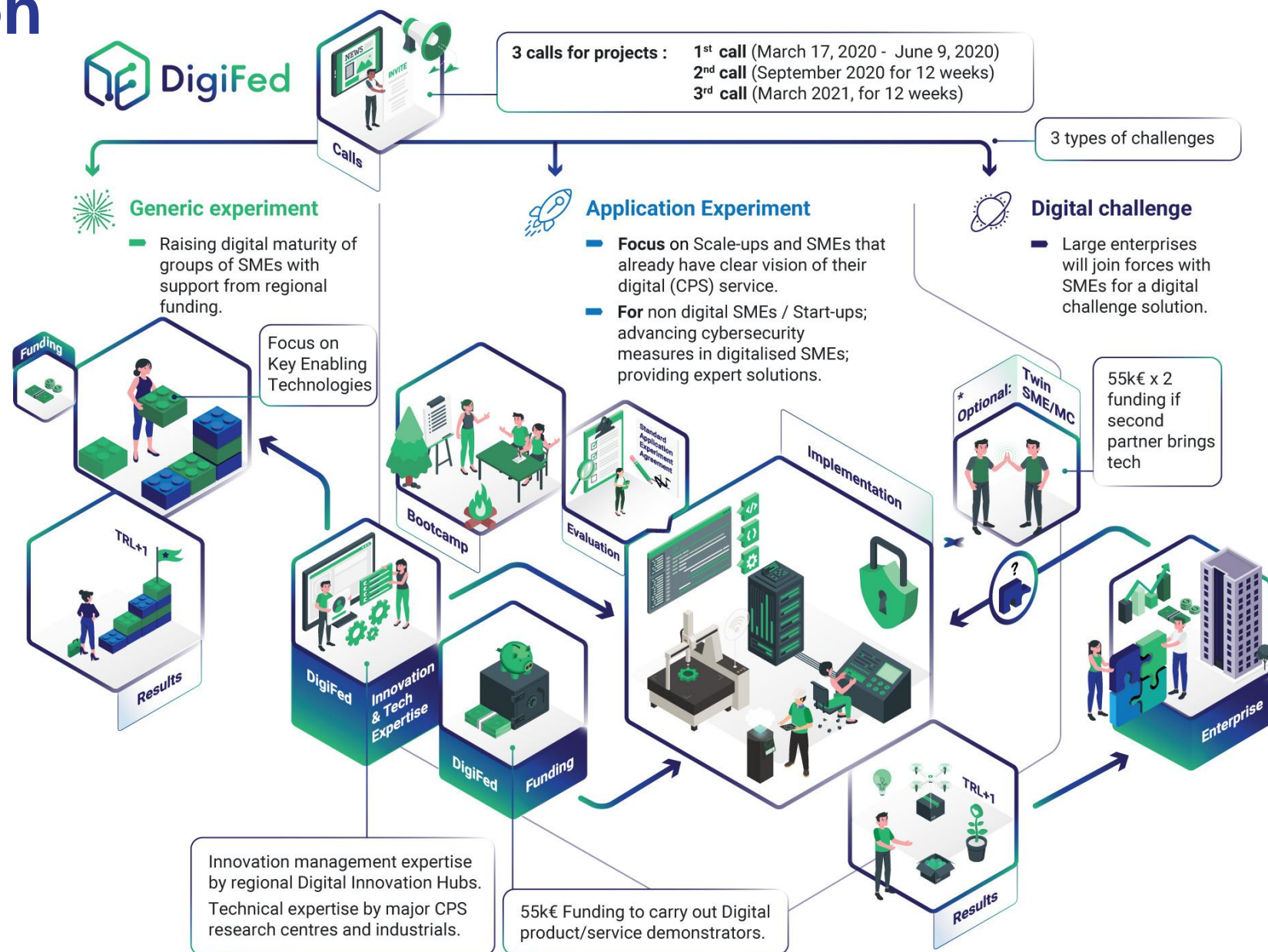


## Generic Experiment Community

- Participate to the technical roadmap of main RTO
- Stay in the loop of latest technological results to be ready for market movements
- Target 40 SME engaged



# DigiFed innovation pathways





# DigiFed offers through Open calls

## “Application Experiment” projects

**55k€** Funding (70%) to carry out Digital product/service demonstrators

+ **Technical support** by major Research Centers and Industrials

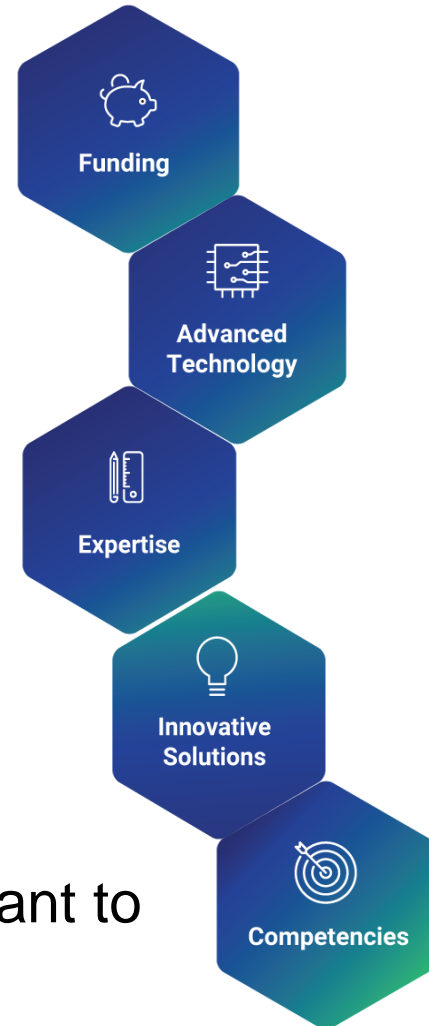
+ **Innovation management training** by Blumorpho

## Targeted companies :

→ “**Non-digital**” SMEs, Start-ups and Mid-caps that want to create

a **1st product/service demonstrator** based on digital technologies

→ SME, start up, Mid-caps **already using digital technologies** that want to integrate **new digital technologies** or **increase their digital maturity**





# 2 types of "Application Experiment"

## SINGLE AE: one company (55k€ )

### - The applicant Company :

- Want to develop a CPS innovation, has a clear market vision,
- Need technical support from a **DigiFed Technology partner** (cross border)

## TWIN AE: 2 companies from 2 different countries (2x 55k€ max)

### - Company #1 :

- want to develop a CPS innovation, has a clear market vision,
- need complementary expertise to validate the concept,

### - Company #2 :

- bring the complementary expertise to realize the prototype or access the market
- **NO** DigiFed Technology partner involved





# DIGITAL CHALLENGE

**DigiFed and European enterprises are looking for StartUps and SMEs who are ready to:**

- Respond to digital challenges for which NO Cyber Physical Systems or embedded systems solutions have been identified in the market
- Collaborate with large organisations to prototype potential solutions

**Digifed and Digital Challenge Owners offer :**

- The opportunity to respond to a real-world industry challenge adding a relevant use case to your unique value proposition.
- Up to €110k in funding – representing 70% of your project's declared budget.
- Added value to your product, through high-level technical expertise, innovation support and access to pilot sites to deploy your solution
- The opportunity to bid to implement the full solution for the Digital Challenge Owner





# GENERIC EXPERIMENT

**Build a Community focused on a Technical Area proposed by a DigiFed technical partners**

- Involve a group of cross border SMEs StartUps and MidCaps **with common challenge**
- **Share** your requirements with other SMEs from different domains with the same technological needs.
- Define **common R&I specifications** to be implemented by the DigiFed partner
- Workshop to give you feedback about the Advanced technology developed by the DigiFed Partner, interact with our expert
- **Stay in the loop of latest technological** developments to be ready for market movements.
- Selected companies will received 8k€ support for their participation to the community



# 4 DigiFed GE COMMUNITY

Enterprises choose one of the 4 different communities:

- **Cybersecurity trusted IoT Platform (CEA)**
- **Industrial Cybersecurity (IKERLAN)**
- **Energy-efficient lighting (BME)**
- **IoT prototyping in agriculture (UL)**

**Q3 2020**

Build communities:

- Enterprises
- Research Centers
- Techno Experts
- Innovation experts



**Q4 2020**

Enterprises common specifications requirement



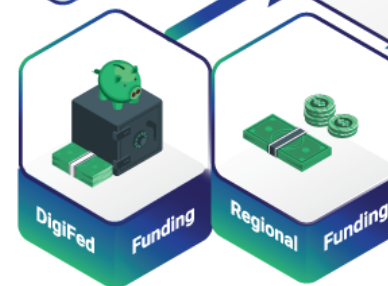
**2021**

Generic Experiment program Implementation



**End of 2020**

Be the first to share the results, New solutions & increase of SME(s) digital maturity



# Six Technology Partner offers

- **CEA** : Cybersecurity of hardware systems
- **IKERLAN**: Industrial cybersecurity; Dependable Embedded Systems; Information and Communication Technologies; HW and communication systems.
- **ST- F**: STM32 MPU and STM32 MCU enabling innovative applications for Smart Industry, Smart City, Smart Home and Smart Things
- **ST- I**: Physical Digital Transformation support with HW&SW tools for fast prototyping addressing innovation on different application domains.
- **Univ Ljubjana** : Cloud DevOps; Electrical blockchain switch; Big Data analytics tools; IoT Prototyping & Sensing Automation System; 5G Experimentation, Quality and Intervention Monitoring System;
- **DGC**: 5G and IoT network testbeds, IoT benchmarking, AI compute, Machine Learning and AI ethics


**Consult Partners Technical offer on DigiFed website**

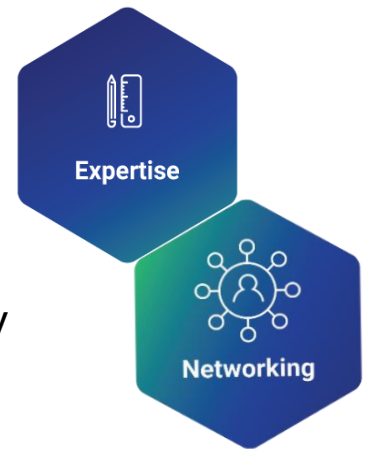
**<https://digifed.org/explore/digifed-offer/>**

# Innovation management support

**All selected projects will receive Innovation Management support :**

- To prepare the new product/service Go-to-market strategy,
- To get access to further funding or to attract private investors.

- **Blumorpho:** Innovation Management Training program 
- **Ikerlan :** Cybersecurity sensibilization training programm to companies that needs it
- DigiFed **Digital Innovation Hubs** open their network to identify new partner for your company



- |                                |   |
|--------------------------------|---|
| ❖ <b>Digital Catapult</b> – UK | ❖ <b>University Ljubjana</b> - Solvenia |
| ❖ <b>Steinbeis</b> – Germany   | ❖ <b>BME</b> - Hungaria                 |
| ❖ <b>MINALOGIC</b> - France    | ❖ <b>Ikerlan</b> - Spain                |



# Q&A SESSION

Time for you to ask your questions

# SECURE infrastructure for trusted IoT platform

- **Function:** security infrastructure establishing an environment to isolate trusted code executed or data manipulation by an IoT platform from an untrusted world
- **Principle:**
  - Integration of a secure hardware module
  - Integration of a trusted OS isolated from Linux with hardware mechanisms
  - Drivers and software bricks to drive the secure hardware module inside the trusted OS
  - Interfaces between untrusted world and trusted world to drive the secure hardware module.
- **Key Performances:**
  - The security hardware module accesses and sensitive data manipulation are hardware isolated from untrusted OS
  - Trusted applications can be developed to have secure services interfacing with untrusted OS
- **Uniqueness:**
  - Hardware isolation from an untrusted world for secure hardware module accesses
  - Stack in trusted OS for hardware secure module accesses
  - Bridge between untrusted OS and trusted world

- **Maturity/TRL:** Technology Readiness Level



- **Applications:**

- Any application using a set of IoT devices to collect personal and/or critical data
- Support for IoT applications developers to secure their product
- Smart factories, Energy production and distribution, Healthcare, critical infrastructure



*Example of SECURE infrastructure implementation using STM secure elements STM32 and TPM with Linux*



Contact : [raphael.collado@cea.fr](mailto:raphael.collado@cea.fr)